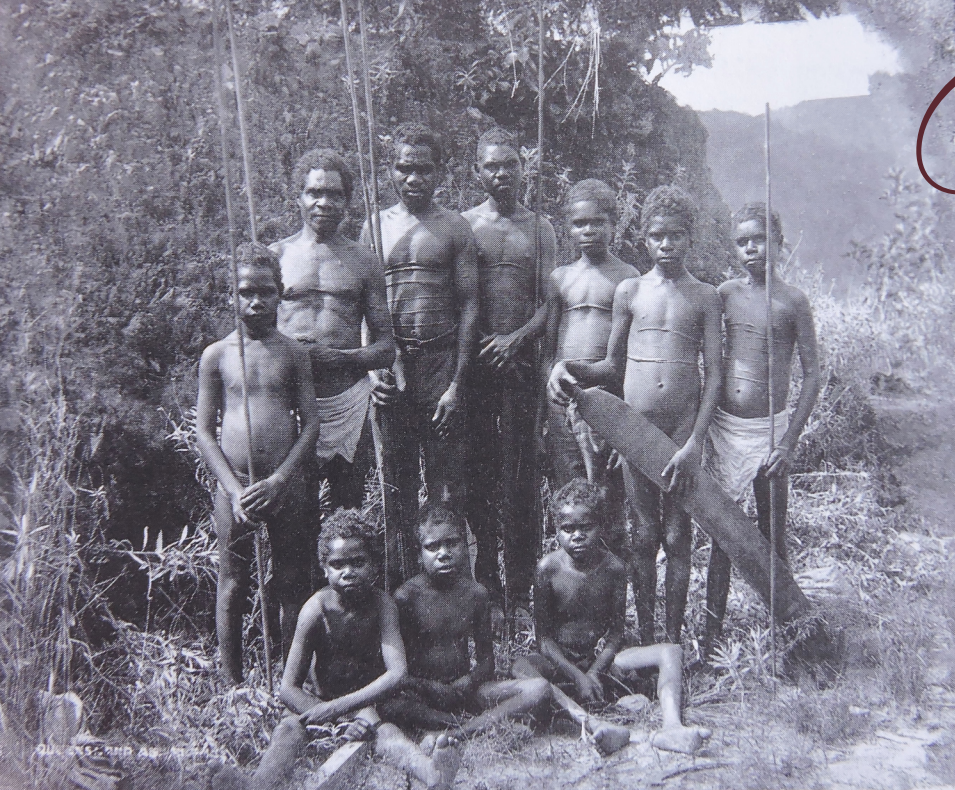


# Buluwai Stories



ABOVE: Photo titled 'Queensland Aborigines', Buluwanydji Ancestral Patriarch, Tji: Auwin ("Toby Brim") back row, third from left, at Barron Gorge, pre Mission Era.



ABOVE LEFT: Toby and Annie Brim (standing, centre right) at their traditional camp on the outskirts of Mona Mona Mission.

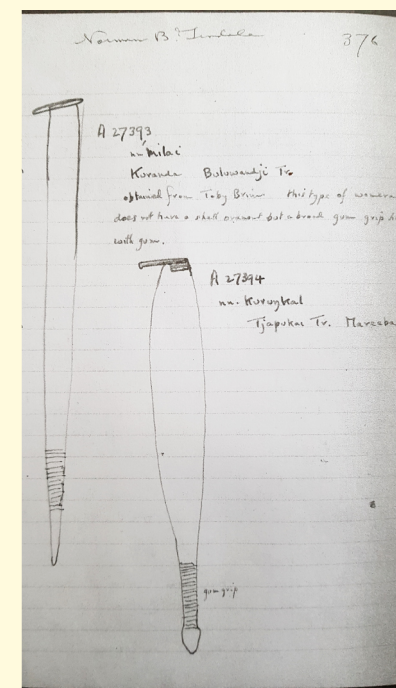
BELOW LEFT: Tji: Auwin ("Toby Brim") 1867 - 1941

BELOW RIGHT: Annie Annie ("Annie Brim") ~1871 - ~1940



ABOVE RIGHT: Toby Brim at Mona Mona Mission.

RIGHT: Norman B. Tindale, A27393 (SA Museum), 'milai, Kuranda Buluwandji Tr. Obtained from Toby Brim. This type of woomera does not have a shaft ornament but a broad gum grip held with gum. A27394 Kurunkal, Tjapukai Tr., gum

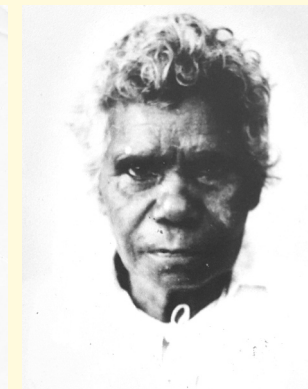
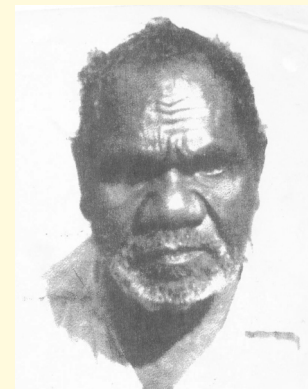


Tji: Auwin ("Toby Brim") was born at "Spearwhaw" in 1867; 6<sup>th</sup> child to Merikun ♂ and Marrakidja ♀ at the beginning of the Frontier Wars Era in Far North Queensland. The Katjiraka clan (of the Buluwai tribe) were decimated as the frontier massacres pushed through Buluwanydji ancestral lands: food forests logged by timber-getters, multiple raids by John Atherton and others to claim land "selections", and the Cairns to Kuranda railway cut through sacred Stoney Creek and Barron River Gorges.

When Toby was around 29 years of age in 1896, another 'dispersal' at Speewah leaves Toby no choice but to tell his two eldest sons Dan and Oscar to 'run for their lives'. It is likely Toby and Annie never knew if their sons survived, however records show that Dan and Oscar made it safely to Hopevale, where Dan stayed on at the mission and Oscar was taken by ship to Camooweal to work as a station hand.

In 1913, Mona Mona Mission opened and another three years passed before Toby and Annie were forcibly removed from Buluwai country and 'safely escorted' to the mission by Veivers brothers. Toby and Annie Brim were among the few adults who reached the mission safely; and among the few Bama survivors remaining who grew up "in the bush". Toby and Annie refused mission accommodation instead living out the rest of their lives in a traditional bayu camp on the outskirts.

Norman Tindale visited Mona Mona mission during the SA Museum Expedition 1938-9 and collected the Brim family tree along with photos, videos, hair samples, language and artefacts. Annie passed on and Toby passed in 1941 and is buried at Mona Mona on Djabugay country, leaving children Middie and Cecil, and grandchildren Marita, Warren, Ivan, Milton, Ruth, Eunice, and Ross.



Honouring our neighbouring tribes, clans and families: Djabugay (north), Yirrgay (east), Muluridji (west), Ngatjan (south west) and Yidindji (south east) with whom we share Dreamtime stories of creator god Bulurru, ancestral lore, kinship and landscape boundaries.

We wish to advise Aboriginal and Torres Strait Islander visitors that this website and links may contain images and voices of people who are deceased. Buluwai Indigenous Corporation (BIC) respectfully acknowledges the First Peoples' and Custodians of the lands, waters and seas on which we work and live. We honour our Elders, past, present and emerging.